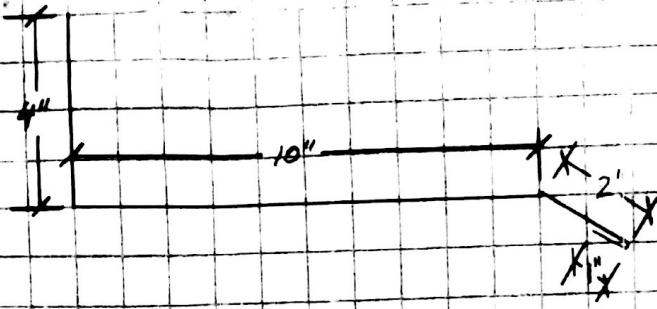
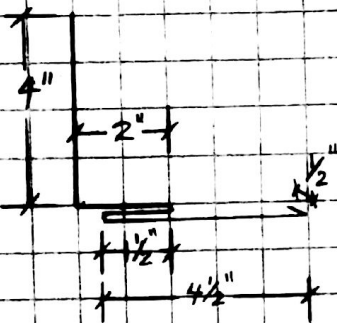


SHOP DRAWINGS FLASHINGS

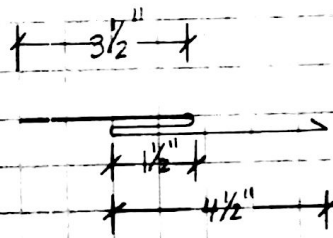
BOTTOM FLASHING
REQUIRES 66" X 17"



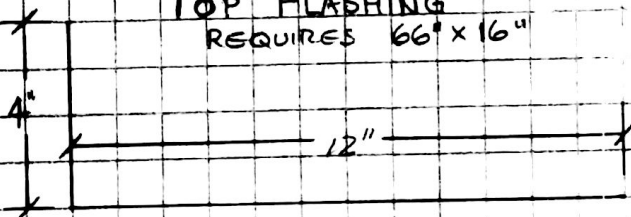
SIDE FLASHING
REQUIRES 72" X 12 1/2"



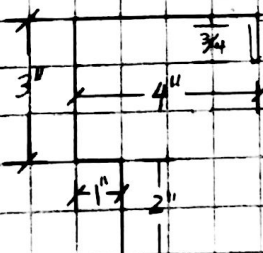
SIDE FLASHING EXTENSION
REQUIRES 72" X 9 1/2"



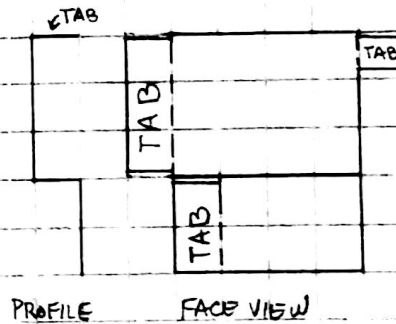
TOP FLASHING
REQUIRES 66" X 16"



CAP FLASHING
REQUIRES 66" X 11 3/4"



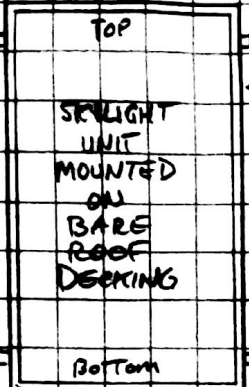
CAP FLASHING CLOSURE



BEGINNING OF PHASE #1 PROJECT
LOOKS LIKE THIS:

PHASE #1 INSTALLATION OF ICE AND WATER SHIELD

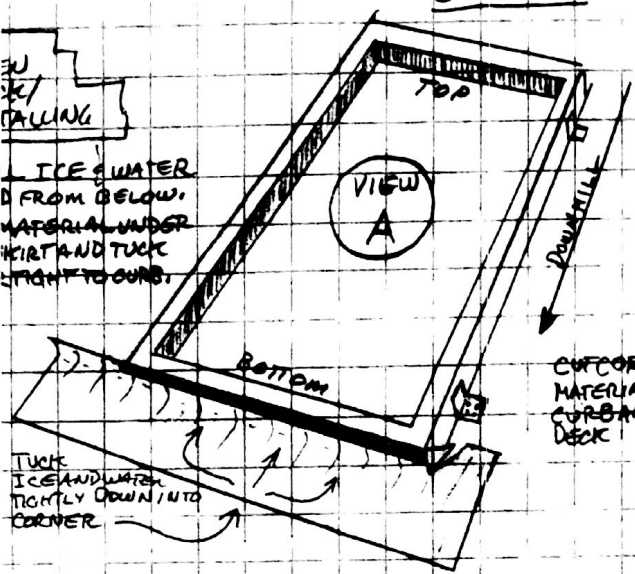
VIEW C



SUGGESTION:
USE SPRAY FOAM TO CLOSE GAP BETWEEN CURB OF UNIT AND DECK/FRAMING BEFORE INSTALLING ICE/WATER.

INSTALL ICE & WATER SHIELD FROM BELOW. PLACE MATERIAL UNDER VINYL SKIRT AND TUCK CORNER TIGHT TO CURB.

STEP #1



CUT CORNER AND LAP MATERIAL BACK ON TO CURB AND DOWN ON TO DECK

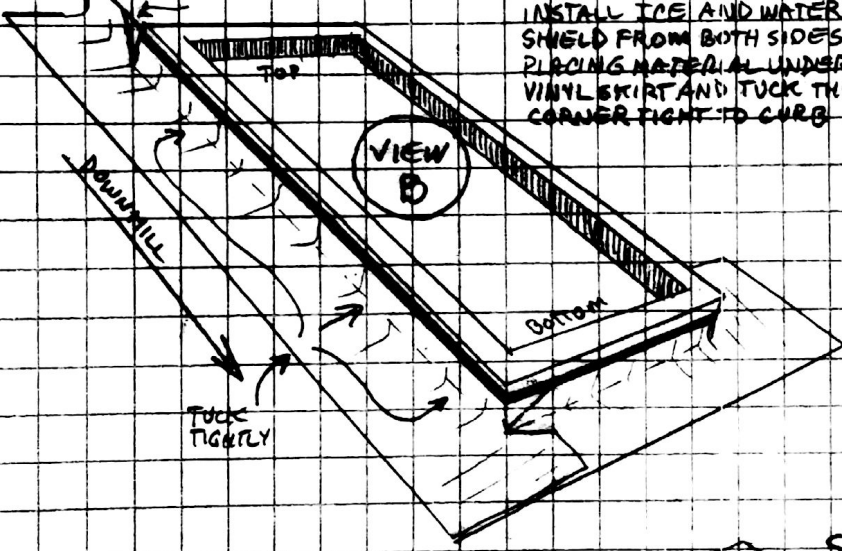
VIEW B

VIEW A

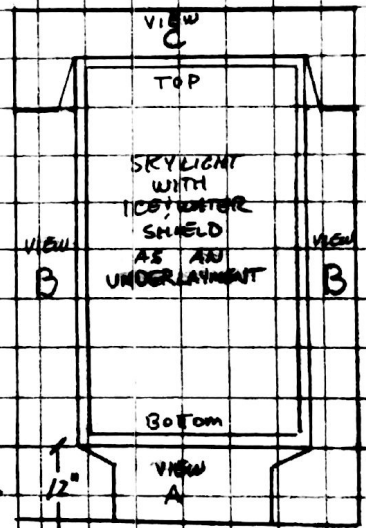
STEP #2

INSTALL ICE AND WATER SHIELD FROM BOTH SIDES PLACING MATERIAL UNDER VINYL SKIRT AND TUCK THE CORNER TIGHT TO CURB

CUT THE CORNER AND LAP MATERIAL BACK ON TO CURB AND DOWN ON TO DECK



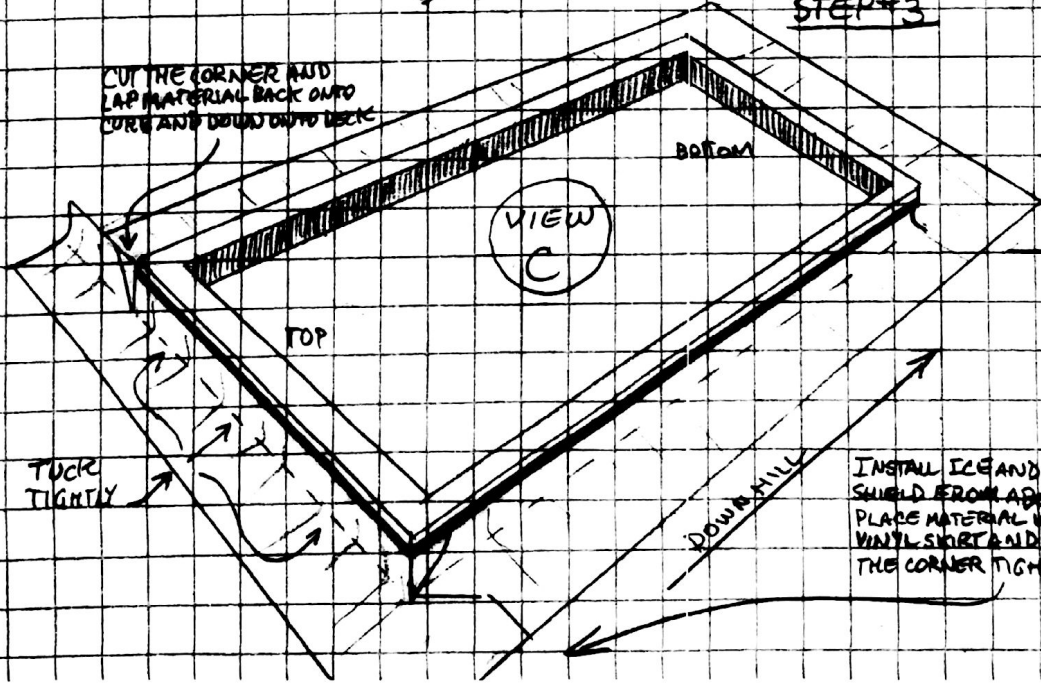
END OF PHASE #1
PROJECT LOOKS LIKE THIS



STEP #3

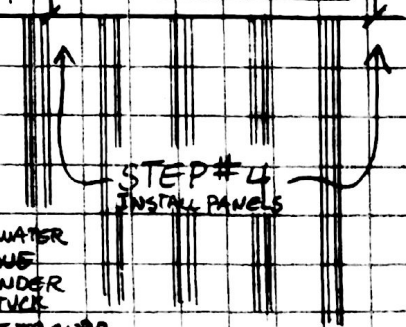
CUT THE CORNER AND LAP MATERIAL BACK ON TO CURB AND DOWN ON TO DECK

TUCK TIGHTLY



INSTALL ICE AND WATER SHIELD FROM ABOVE PLACE MATERIAL UNDER VINYL SKIRT AND TUCK THE CORNER TIGHT TO CURB

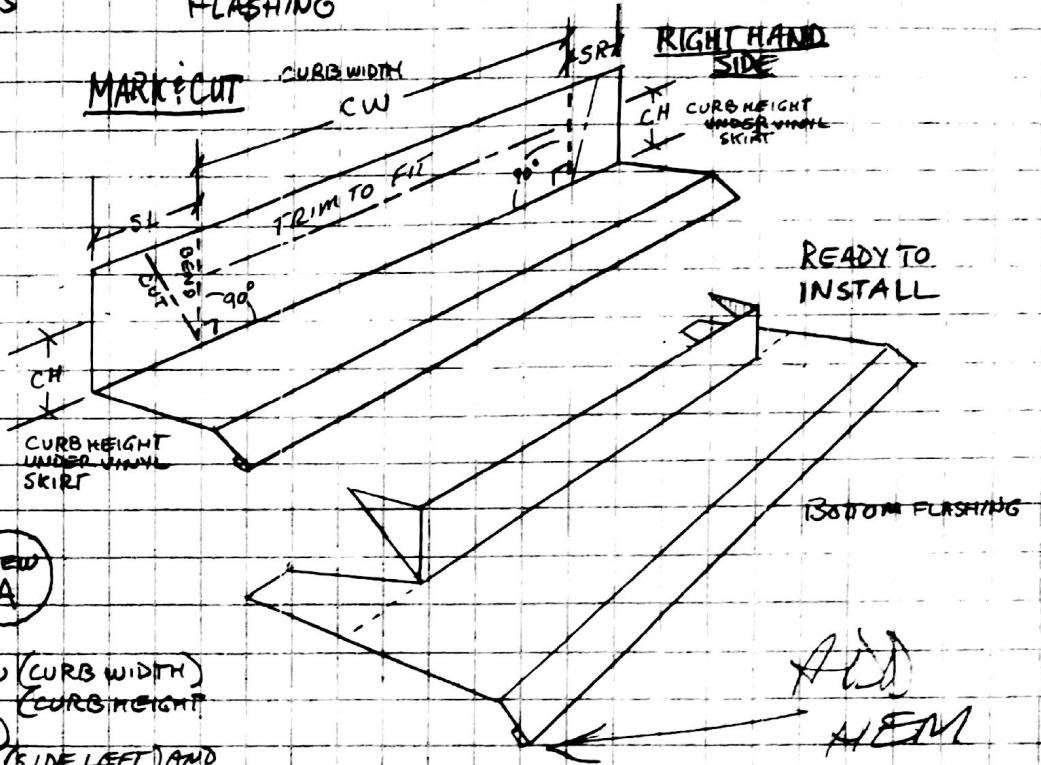
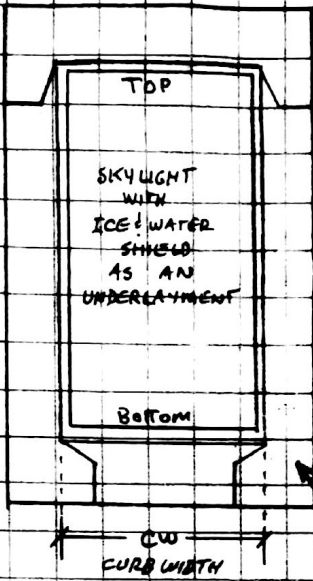
STEP #4 INSTALL PANELS



PHASE #2

BEGINNING OF PHASE #2
PROJECT LOOKS LIKE THIS

INSTALLATION OF BOTTOM
FLASHING



STEP #1 (MEASURE)

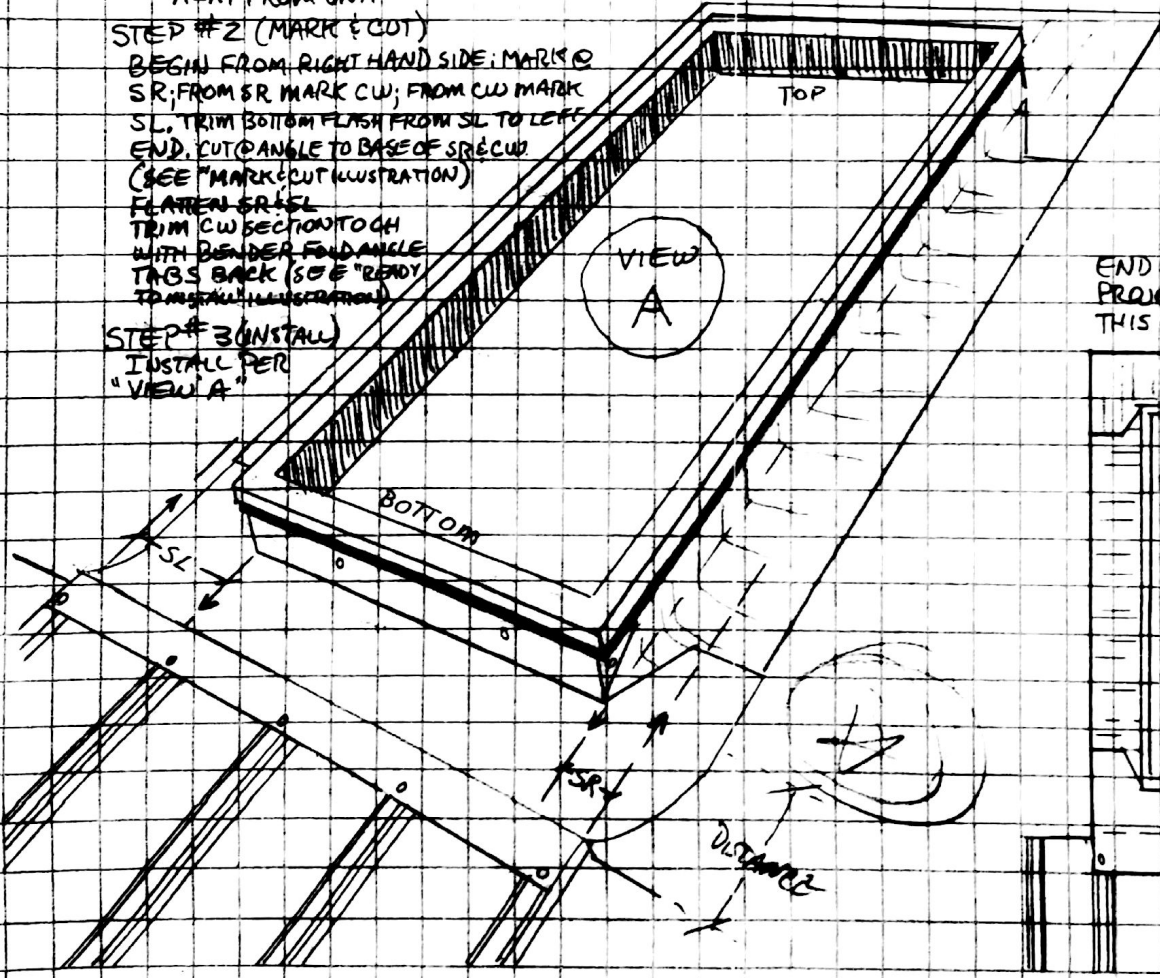
- MEASURE DISTANCE CW (CURB WIDTH)
- MEASURE DISTANCE CH (CURB HEIGHT UNDER VINYL SKIRT)
- MEASURE DISTANCE SL (SIDE LEFT) AND SR (SIDE RIGHT) FROM SIDE OF CURB TO TOP/FAR SIDE OF CLOSEST RIB MOVING AWAY FROM UNIT

STEP #2 (MARK & CUT)

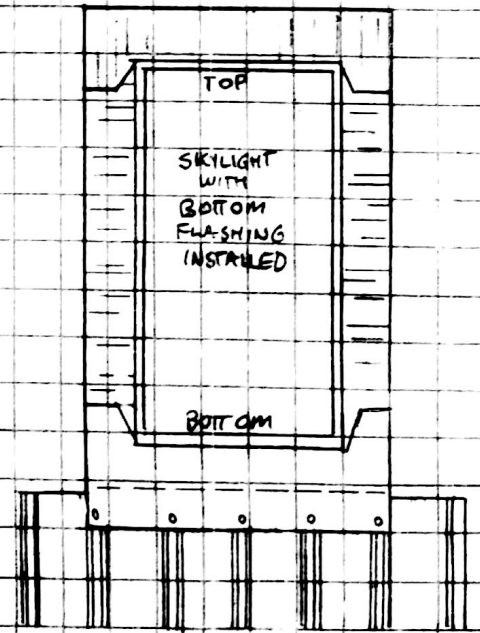
- BEGIN FROM RIGHT HAND SIDE; MARK @ SR; FROM SR MARK CW; FROM CW MARK SL. TRIM BOTTOM FLASH FROM SL TO LEFT END. CUT @ ANGLE TO BASE OF SR @ CW. (SEE "MARK & CUT" ILLUSTRATION)
- FLATTEN SR @ SL
- TRIM CW SECTION TO CH WITH BENDER FOUND ANGLE TABS BACK (SEE "READY TO INSTALL" ILLUSTRATION)

STEP #3 (INSTALL)

- INSTALL PER "VIEW A"



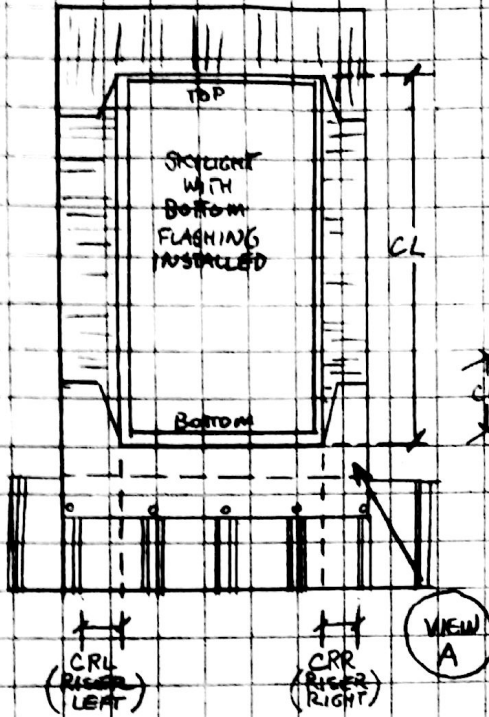
END OF PHASE #2
PROJECT LOOKS LIKE THIS



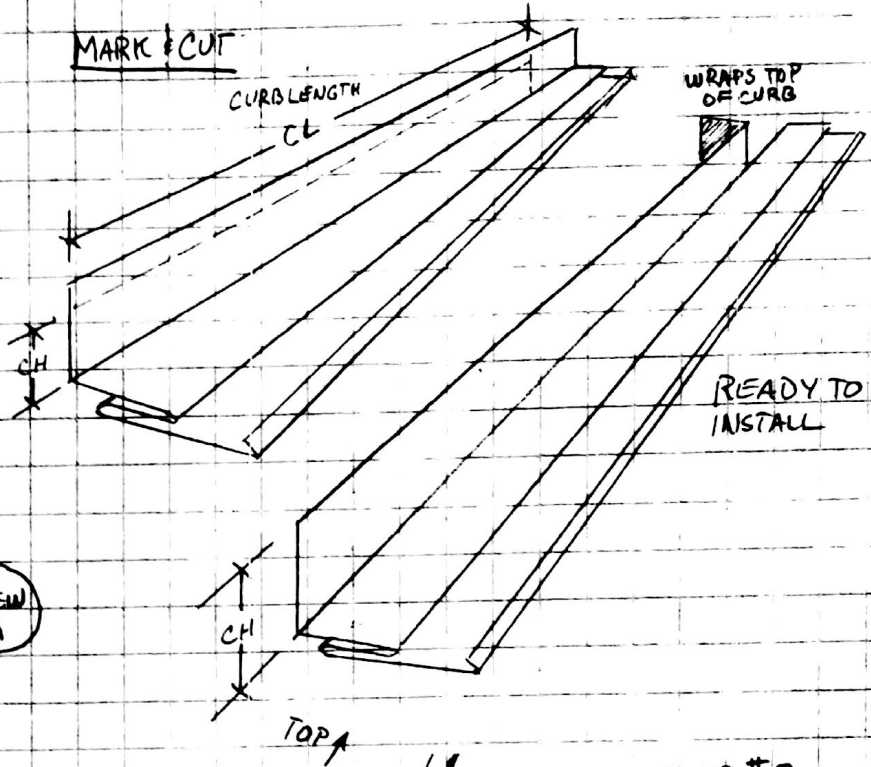
PHASE #3

INSTALLATION OF SIDE FLASHINGS

BEGINNING OF PHASE #3
PROJECT LOOKS LIKE THIS



MARK & CUT



STEP #1 (MEASURE)

MEASURE DISTANCE CL (CURB LENGTH)
MEASURE DISTANCE CH (CURB HEIGHT)
MEASURE DISTANCE CRL (CURB TO RISER LEFT) AND CRR (CURB TO RISER RIGHT)

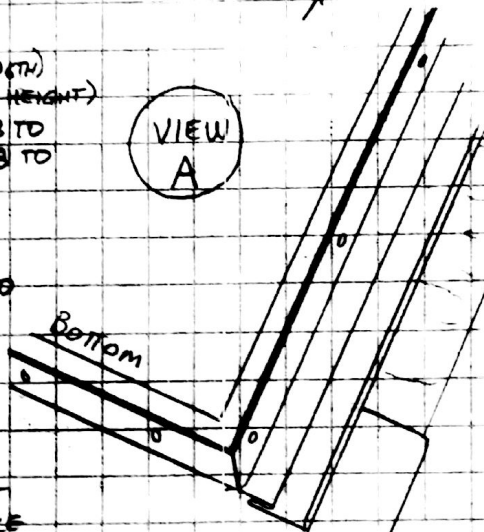
STEP #2 (MARK & CUT)

MARK & CUT SIDE FLASHINGS CREATING TABS AS PER "READY TO INSTALL" ILLUSTRATION.
MARK & CUT CURB HEIGHT CH

STEP #3

INSTALL SIDE PANS. PANS EXTEND 10" ABOVE TOP OF CURB AND 16" BELOW CURB. * TRIM PANS AT BOTTOM CORNERS. SEE BELOW ILLUSTRATION.

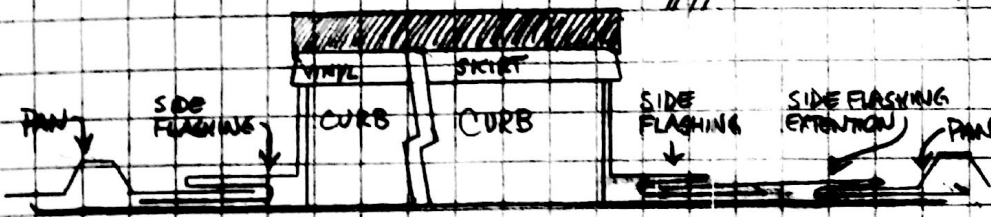
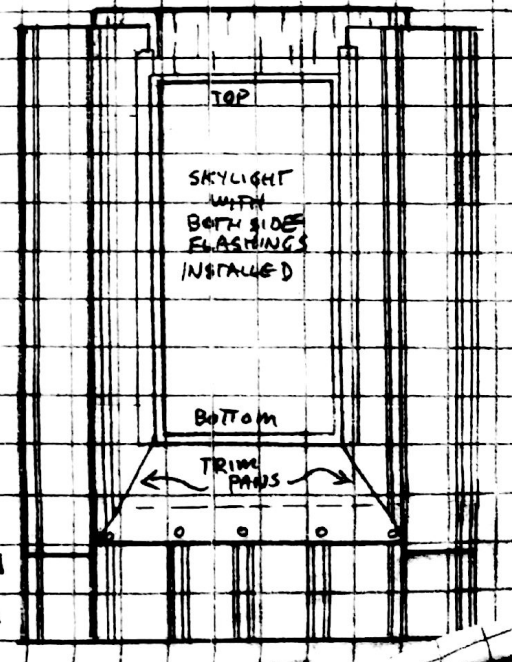
VIEW A



END OF PHASE #3
PROJECT LOOKS LIKE THIS

IMPORTANT *

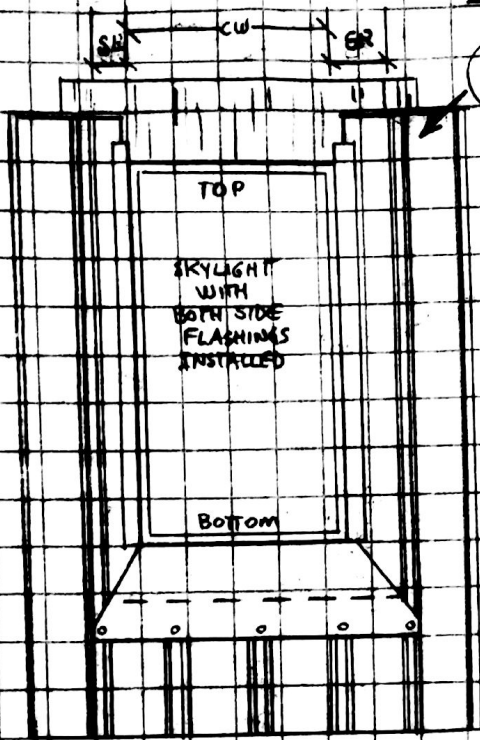
IF DISTANCE CRL OR CRR IS LESS THAN 2", THE PAN MUST BE TRIMMED TO MAKE DISTANCE FROM THE CURB AND THE EDGE OF THE PAN 4" (NO GREATER THAN 4 1/2"). USE THE SIDE FLASHING EXTENSION TO FILL BETWEEN SIDE FLASHING AND TRIMMED PAN. SEE BELOW ILLUSTRATION. CRL - NORMAL APPLICATION, CRR USES SIDE FLASHING EXTENSION.



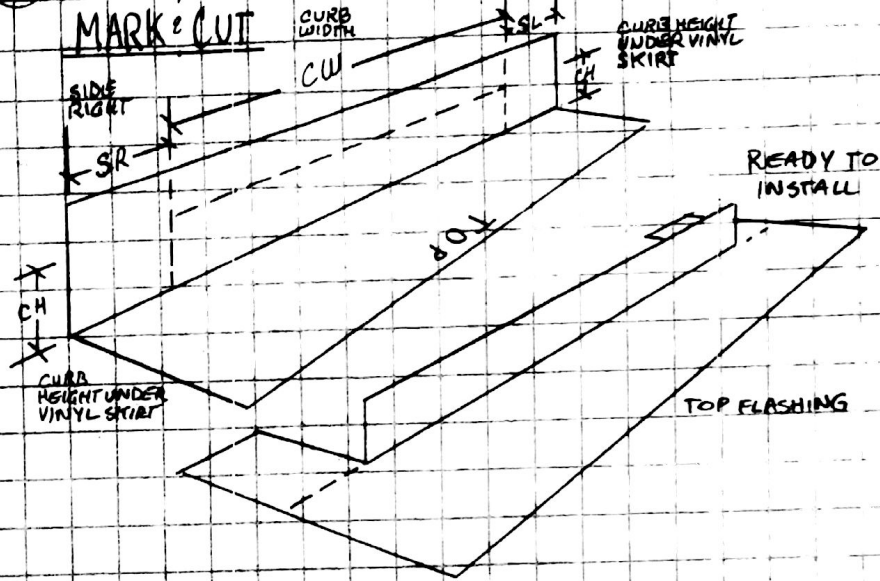
PHASE #4

INSTALLATION OF TOP FLASHING

BEGINNING OF PHASE #4
LOOKS LIKE THIS



MARK & CUT



RIGHT HAND SIDE

STEP #1 (MEASURE)

- MEASURE DISTANCE CW (CURB WIDTH)
- MEASURE DISTANCE CH (CURB HEIGHT UNDER VINYL SKIRT)
- MEASURE DISTANCE SR (SIDE RIGHT) AND SL (SIDE LEFT) FROM SIDE OF CURB TO BOTTOM/NEAR SIDE OF CLOSEST RIB MOVING AWAY FROM UNIT

STEP #2

BEGIN FROM RIGHT HAND SIDE; MARK AND CUT SL (SIDE LEFT), FROM SL MARK CW; FROM CW MARK AND CUT SR (SIDE RIGHT) - TRIMMING OFF EXCESS

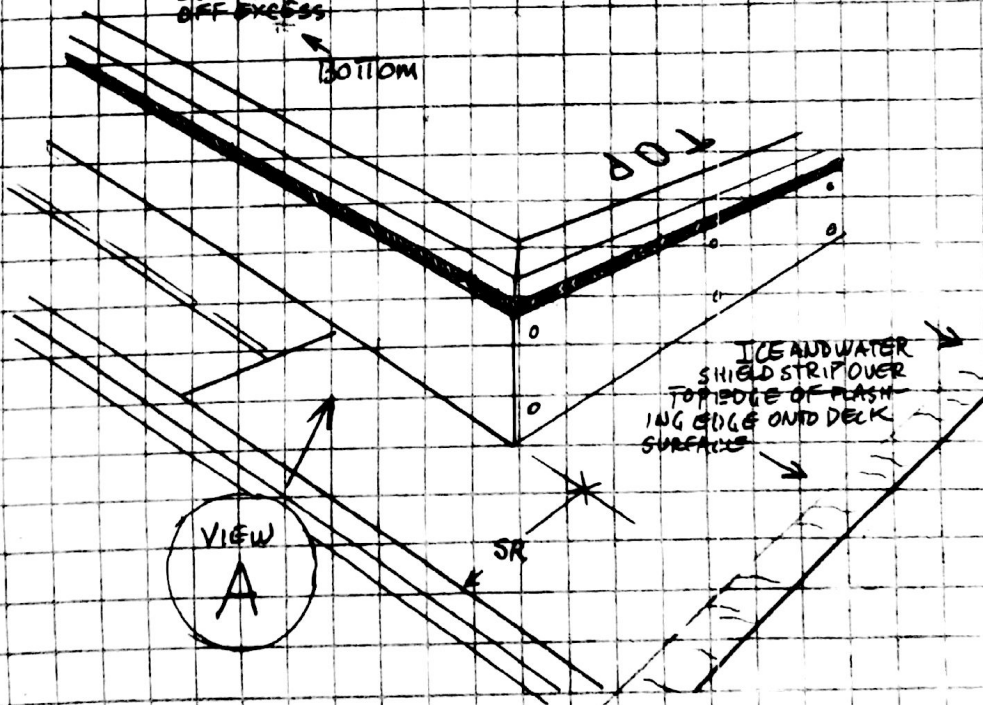
STEP #3

- MEASURE ROOF PAN TO ALLOW FOR 8" OF SPACE (UNCOVERED) BETWEEN CURB AND END OF TOP ROOF PANEL(S) ABOVE UNIT.

STEP #4

INSTALL ROOF PAN(S) AND SEAL STRIPS ON DECK AND OVER FLASHING. USE SCREWS SPARINGLY AND NAIL FLASHINGS WHERE POSSIBLE.

END OF PHASE #4
LOOKS LIKE LIKE THIS



UPPER RIGHT PANEL OMITTED FOR CLARITY

